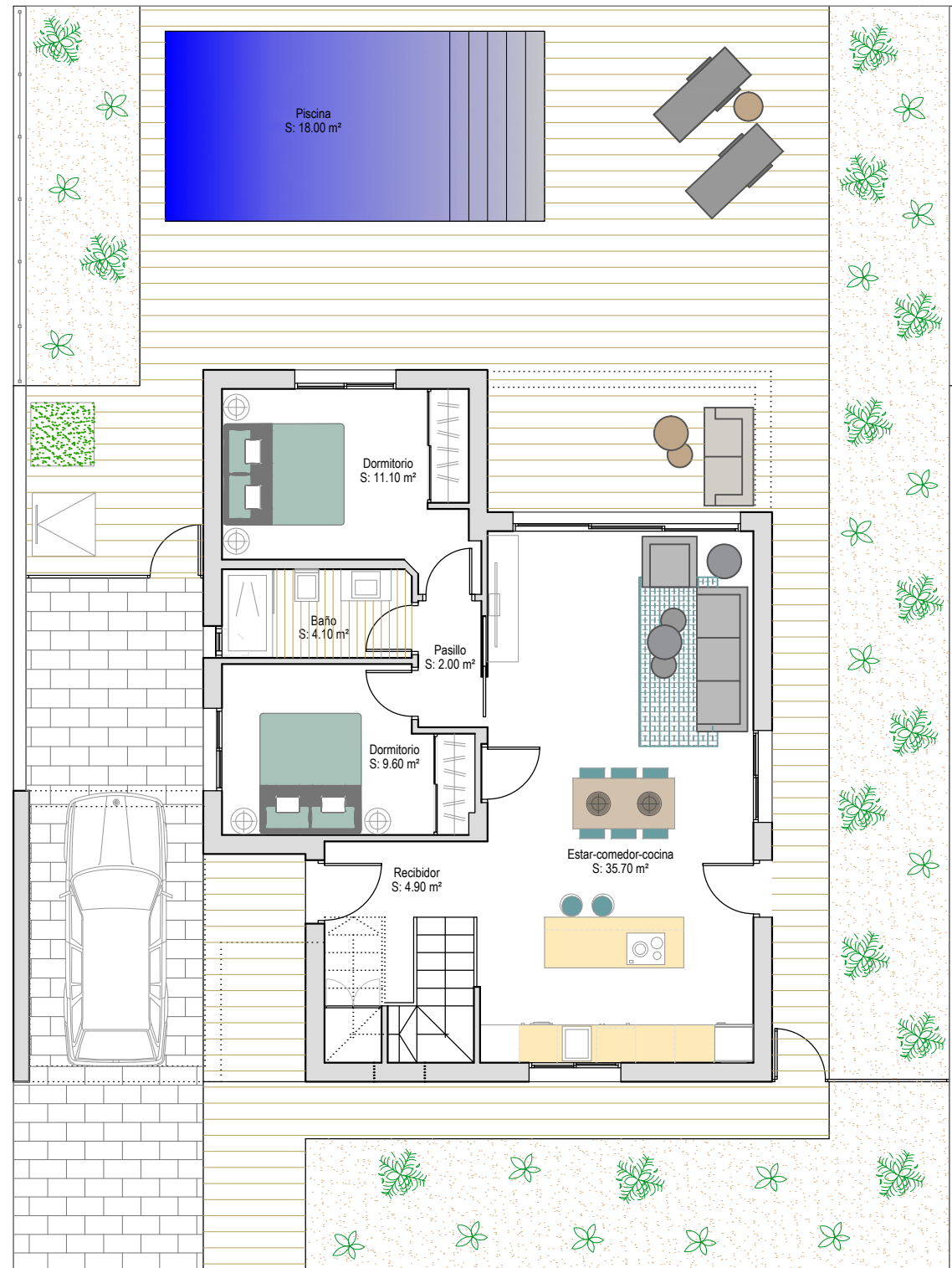
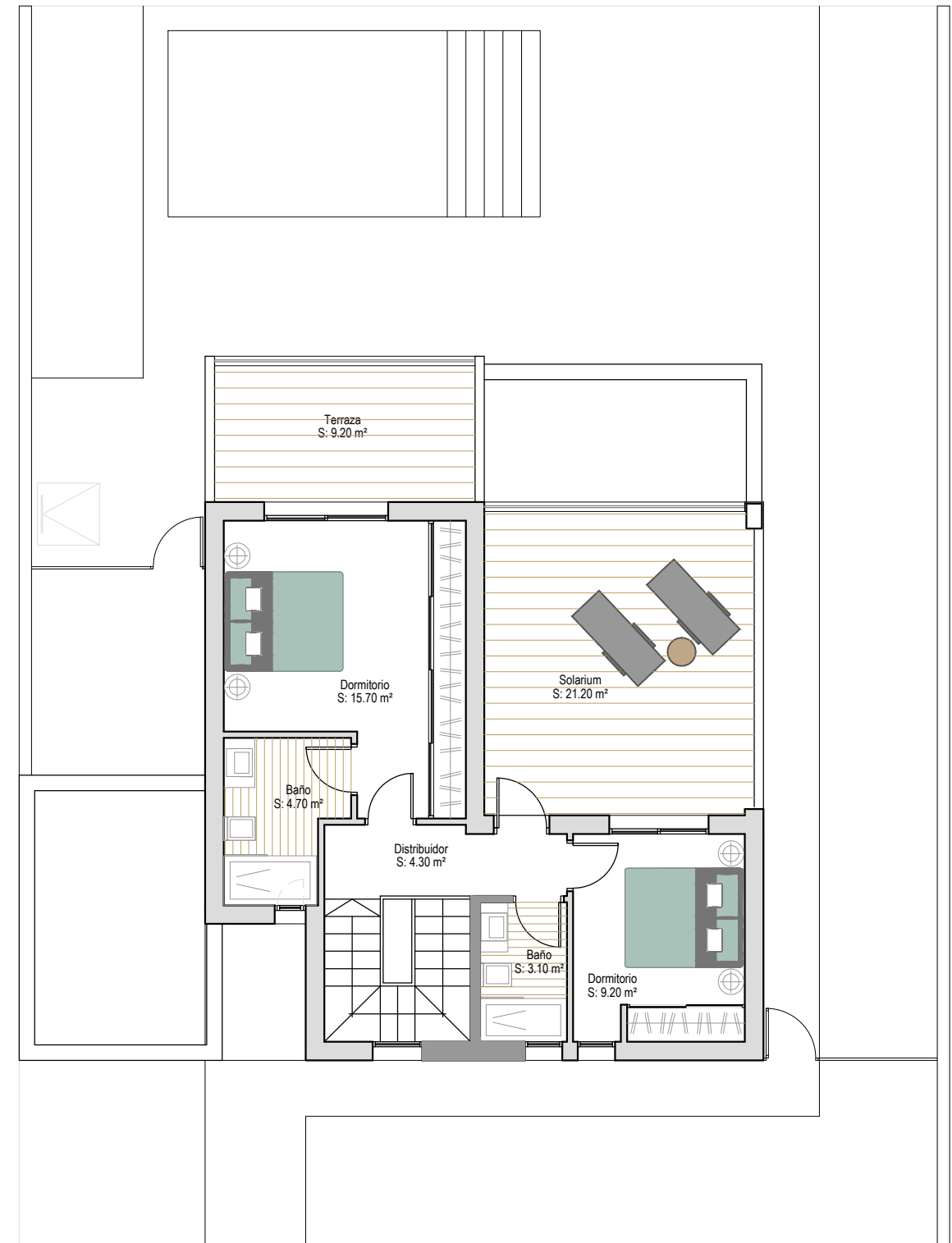


VILLA 10.17a

Sup. Construida P. Baja:	84'48 m ²
Sup. Construida P. Primera:	50'57 m ²
Sup. Construida	135'05 m²
Sup. Solarium:	21'20 m ²
Sup. Terraza:	9'20 m ²
Sup. Jardín:	189'05 m ²
Sup. Piscina:	18.00 m ²
TOTAL:	372'52 m²
Sup. Parcela:	300.00 m ²



Planta baja



Planta primera